

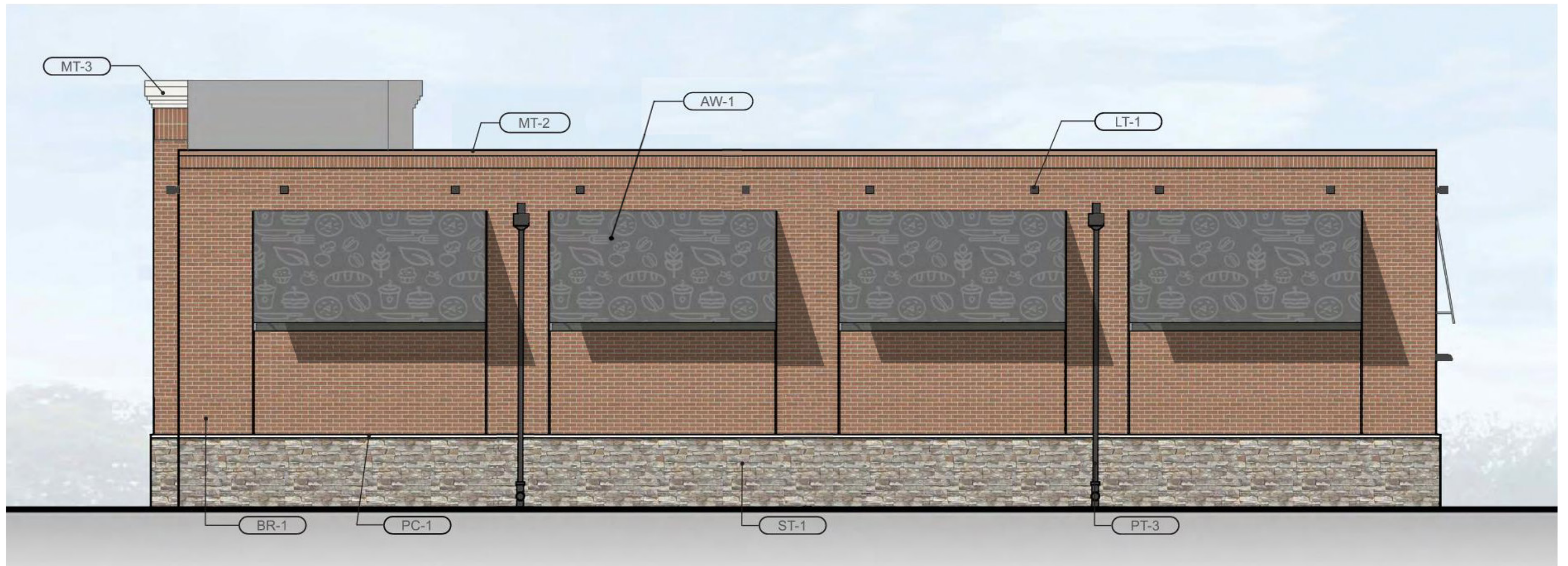




### Proposed Exterior Materials

- AW-1** Awnings - Final Color and Graphic Design T.B.D.
- BR-1** Thin Brick: McNEar Brick & Block, Sandmold Series, Modular: Color, Genova. Brick Mortar: Workrite #2223 type "S" Masonry cement.
- GL-1** 1" Thick Insulated Glass
- GL-2** 1/4" Thick Tempered Glass
- LT-1** LED Wall Washer
- LT-4** LED Wall Sconces
- MT-2** Metal Coping: Englert, Color, Colonial Red
- MT-3** Metal Coping: Englert, Color, Bone White
- PC-1** Precast Watertable: Eldorado Stone, Split Edge Wainscot Sill: Color, White Cloud
- PT-1** Exterior Metal Grade Paint (Window Mullions, Door Frame): Kawneer 451, Alum / Anodized, #29 Black
- SD-1** Fiber Cement Panels: Nichiha, Vintage Wood, Color: Ash (EPC764F)
- SG-1** Brand Standard Internally Illuminated Sign
- ST-1** Stone Veneer: Eldorado Precast Stacked Stone: Color, Nantucket

### NORTH ELEVATION (POINT LOOKOUT ROAD)



**Proposed Exterior Materials**

- AW-1 Awnings - Final Color and Graphic Design T.B.D.
- BR-1 Thin Brick: McNEar Brick & Block, Sandmold Series, Modular: Color, Genova.  
Brick Mortar: Workrite #2223 type "S" Masonry cement.
- LT-1 LED Wall Washer
- LT-4 LED Wall Sconces
- MT-2 Metal Coping: Englert, Color, Colonial Red
- MT-3 Metal Coping: Englert, Color, Bone White
- PC-1 Precast Watertable: Eldorado Stone, Split Edge Wainscot Sill: Color, White Cloud
- PT-3 Exterior Metal Grade Paint on Door and Frame: Color to match storefront, Black
- SD-1 Fiber Cement Panels: Nichiha, Vintage Wood, Color: Ash (EPC764F)
- ST-1 Stone Veneer: Eldorado Precast Stacked Stone: Color, Nantucket

**SOUTH ELEVATION**



**Proposed Exterior Materials**

- AW-1 Awnings - Final Color and Graphic Design T.B.D.
  - BR-1 Thin Brick: McNEar Brick & Block, Sandmold Series, Modular: Color, Genova.  
Brick Mortar: Workrite #2223 type "S" Masonry cement.
  - LT-1 LED Wall Washer
  - MT-2 Metal Coping: Englert, Color, Colonial Red
- MT-3 Metal Coping: Englert, Color, Bone White
  - PC-1 Precast Watertable: Eldorado Stone, Split Edge Wainscot Sill: Color, White Cloud
  - SD-1 Fiber Cement Panels: Nichiha, Vintage Wood, Color: Ash (EPC764F)
  - ST-1 Stone Veneer: Eldorado Precast Stacked Stone: Color, Nantucket

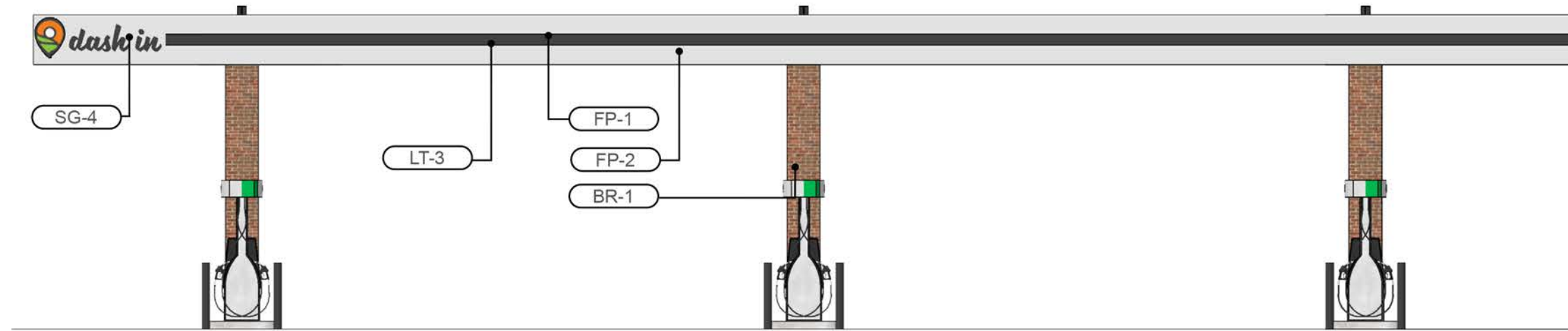
**EAST ELEVATION**



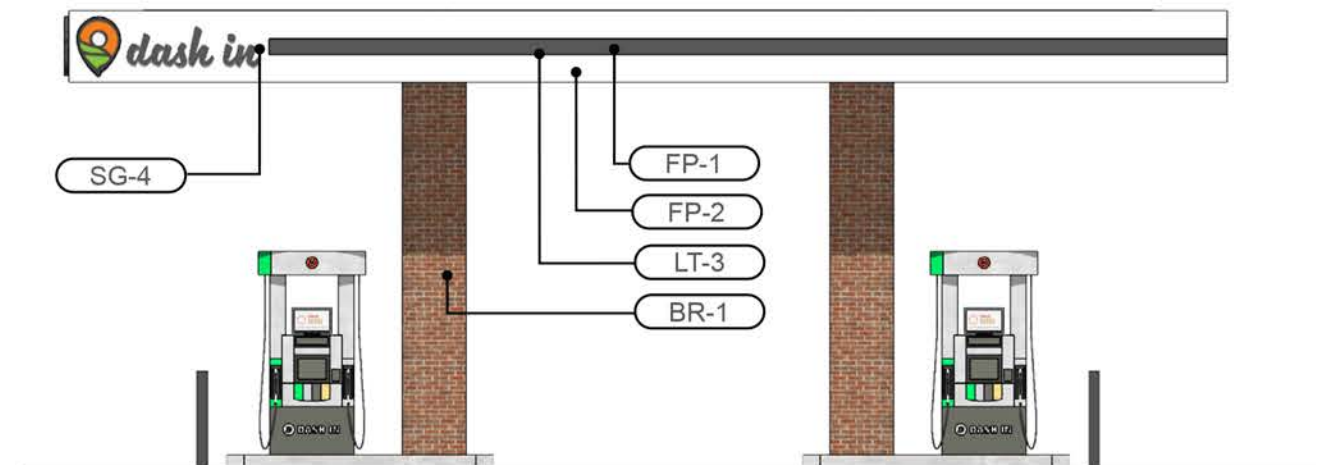
**Proposed Exterior Materials**

- AW-1 Awnings - Final Color and Graphic Design T.B.D.
- BR-1 Thin Brick: McNEar Brick & Block, Sandmold Series, Modular: Color, Genova.  
Brick Mortar: Workrite #2223 type "S" Masonry cement.
- LT-1 LED Wall Washer
- MT-2 Metal Coping: Englert, Color, Colonial Red
- MT-3 Metal Coping: Englert, Color, Bone White
- PC-1 Precast Watertable: Eldorado Stone, Split Edge Wainscot Sill: Color, White Cloud
- PT-3 Exterior Metal Grade Paint on Door and Frame: Color to match storefront, Black
- SD-1 Fiber Cement Panels: Nichiha, Vintage Wood, Color: Ash (EPC764F)
- SG-1 Brand Standard Internally Illuminated Sign
- ST-1 Stone Veneer: Eldorado Precast Stacked Stone: Color, Nantucket

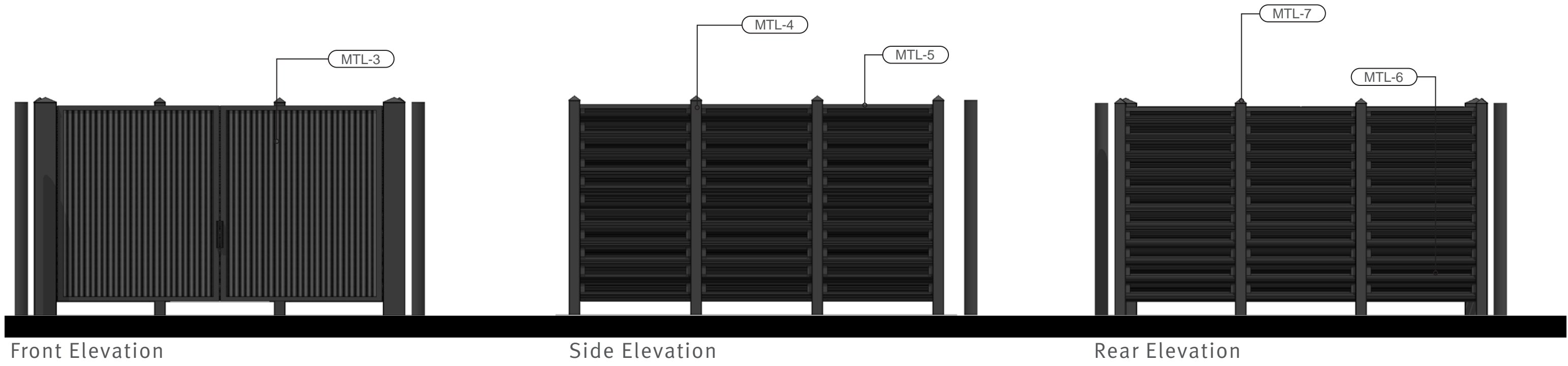
**WEST ELEVATION (U.S. ROUTE 243)**



- BR-1** Thin Brick: McNEar Brick & Block, Sandmold Series, Modular: Color, Genova.  
Brick Mortar: Workrite #2223 type "S" Masonry cement.
- FP-1** Vaccum Formed Polycarbonate, Grey
- FP-2** Metal Fascia Panel, Exposed at Ends, White
- LT-3** Internally Illuminated Linear LED Bar Light
- SG-4** Internally Illuminated Dash In Light Panel



**FRONT & SIDE ELEVATION**



**Proposed Exterior Materials**

- MTL -3** NewEuro Fence Gate - Powder Coated Black
- MTL-4** 5"x5" HSS Post - Powder Coated Black
- MTL-5** NewEuro Fence Profile U Top Rail - Powder Coated Black
- MLT-6** NeuEuro Fence XL-O Slat - Powder Coated Black
- MLT-7** Metal Post Cap - Powder Coated Black

NOTE: This product from NewEuro Fence comes in a standard Powder Coated Black. This system was selected by Jim with TWG. The only element that does not appear to be apart of the system is the HSS supports. The supports and the caps are to be fabricated and finished to match the system.