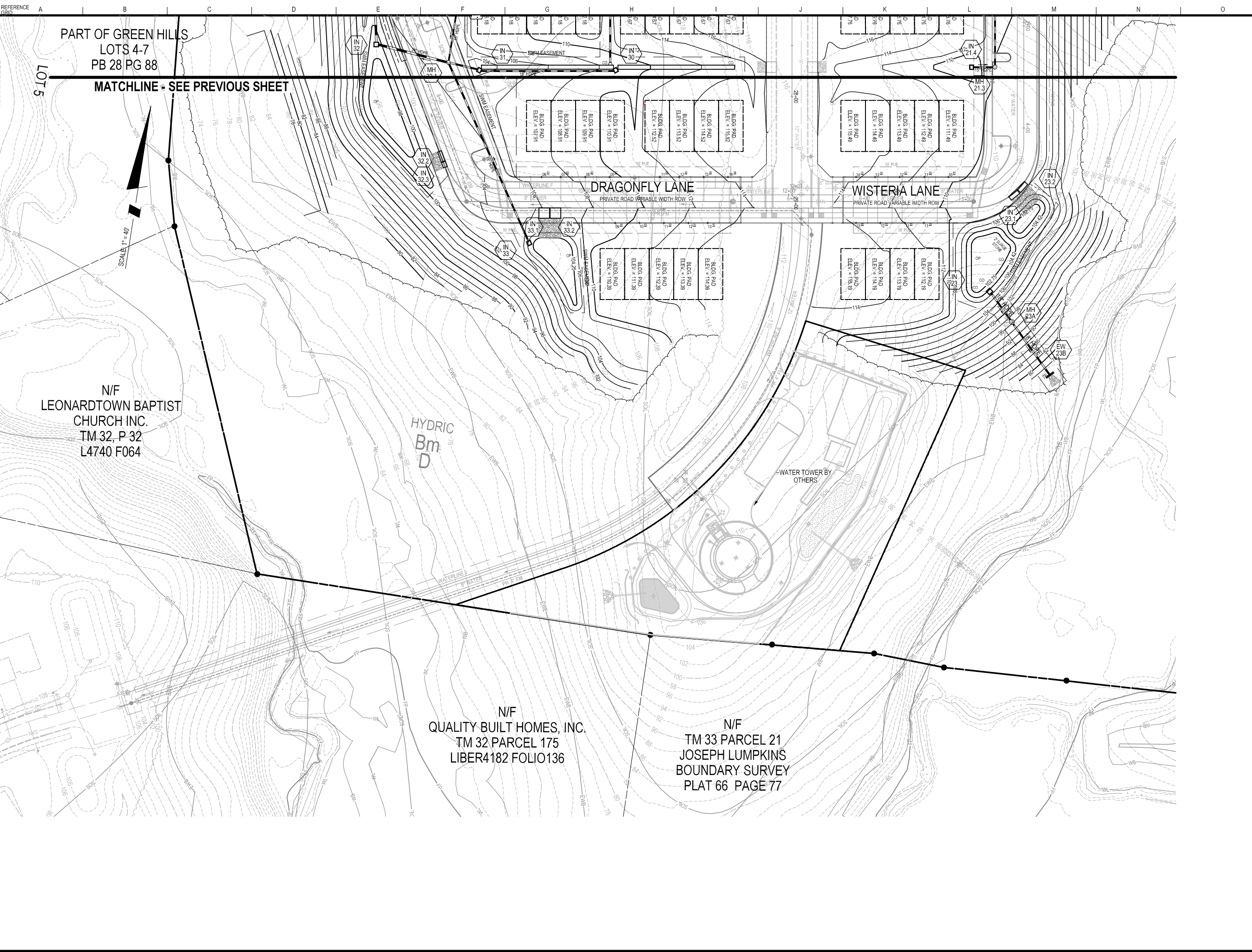


The original of this drawing document was prepared by Soltesz, Inc. (SOLTESZ). If this document was not obtained directly from Soltesz, Inc. it was transmitted electronically. SOLTESZ cannot guarantee that unauthorized changes and/or alterations were not made by others. If verification of the information contained hereon is needed, contact should be made directly with SOLTESZ. SOLTESZ makes no warranties, express or implied, concerning the accuracy of any information that has been transmitted by electronic means.



SOLTESZ, INC.
 WALDORF OFFICE
 401 Post Office Road, Suite 103
 Waldorf, MD 20602
 P. 301.870.2166 F. 301.870.2884
 www.solteszco.com

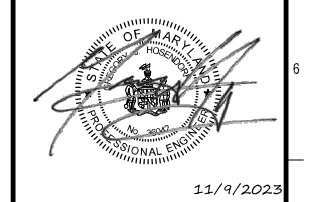
Engineering
 Surveying
 Planning
 Environmental Sciences

| NO. | REVISIONS | BY | DATE |
|-----|-----------|----|------|
| | | | |
| | | | |
| | | | |

MISS UTILITY NOTE
 INFORMATION CONCERNING EXISTING UNDERGROUND UTILITIES WAS OBTAINED FROM AVAILABLE RECORDS. THE CONTRACTOR MUST DETERMINE THE EXACT LOCATION AND ELEVATION OF ALL EXISTING UTILITIES AND UTILITY CROSSINGS BY DIGGING TEST PITS BY HAND, WELL IN ADVANCE OF THE START OF EXCAVATION. CONTACT "MISS UTILITY" AT 1-800-257-7777, 48 HOURS PRIOR TO THE START OF EXCAVATION. IF CLEARANCES ARE LESS THAN SHOWN ON THIS PLAN OR TWELVE (12) INCHES, WHOEVER IS LESS, CONTACT THE ENGINEER AND THE UTILITY COMPANY BEFORE PROCEEDING WITH CONSTRUCTION. CLEARANCES LESS THAN NOTED MAY REQUIRE REVISIONS TO THIS PLAN.

OWNER / DEVELOPER / APPLICANT
 QUALITY BUILT HOMES, INC.
 5431 KETCH ROAD
 PRINCE FREDERICK, MD 20678
 410-536-6008
 RODNEY GERTZ

PROFESSIONAL CERTIFICATION
 I HEREBY CERTIFY THAT THESE DOCUMENTS WERE PREPARED OR APPROVED BY ME, AND THAT I AM A DULY LICENSED PROFESSIONAL ENGINEER UNDER THE LAWS OF THE STATE OF MARYLAND.
 LICENSE NO. 35942 EXPIRATION DATE: 8/26/2024



INTERIM GRADING AND STORM DRAINAGE PLAN 2

SITE DEVELOPMENT PLAN

THE MEADOWS AT TOWN RUN

SECTION II, PHASE 2 - 74 TOWNHOMES
THIRD (3RD) ELECTION DISTRICT, ST. MARY'S COUNTY, MARYLAND

| | |
|--|-----------------------------|
| TAX MAP 32 / 175 | ZONING CATEGORY: L-PUDM |
| WATER & SEWER CATEGORY: TBD | GRID 12 |
| SITE DATUM HORIZONTAL: NAD 83 VERTICAL: NAVD 88 | LIBER / FOLIO 2377 / 174 |
| DATE: 11/9/2023 DESIGNED: GJH ENGINEER: GJH, JC CHECKED: GJH CAD STD'S VERSION: V8 / NCS | |
| SHEET 8 OF 41 | |
| PROJECT NO. 1480-08-00 | |