

EXTERIOR FINISH MATERIALS

MARK	DESCRIPTION
#	
	HARDIE TRIM, SMOOTH, MATCH FINISH OF S1
C1	PRECAST CONCRETE SILL
G1	SIGNAGE - SEE SIGNAGE DRAWINGS (BY OTHERS)
G2	DIRECTIONAL SIGNAGE - SEE SIGNAGE DRAWINGS (BY OTHERS)
M1	PREFINISHED METAL PARAPET CAP, COLOR: BLACK
M2	TRELLIS - POWDER COATED: BLACK

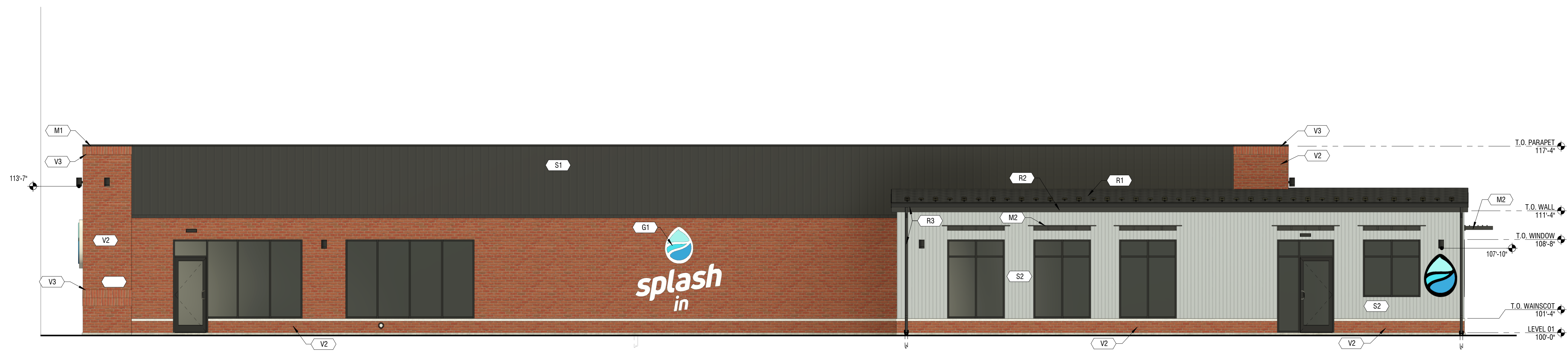
MARK	DESCRIPTION
R1	STANDING SEAM METAL ROOF, COLOR: BLACK
R2	METAL ROOF FASCIA, COLOR: BLACK
R3	ROOF GUTTERS & DOWNSPOUTS, COLOR: BLACK
S1	HARDIE BOARD & BATTEN SIDING, SMOOTH, COLLECTION: THE DREAM COLLECTION, COLOR: NIGHT GRAY TO BE CONFIRMED BY ARCHITECT/OWNER
S2	3/4" CORRUGATED METAL PANEL, FINISH: GALVALUME
T1	HARDIE TRIM, SMOOTH, MATCH FINISH OF S1

MARK	DESCRIPTION
T2	METAL J-TRIM, MATCH FINISH OF S2
V2	STANDARD SIZE THIN BRICK VENEER (RUNNING COURSE), MCNEAR BRICK & BLOCK, STANDARD SERIES, MODULAR, GENOVA, (PAINTED WHITE) MOTOR: WORARITE #2410 SLATE, TYPE S MORTAR
V3	STANDARD SIZE THIN BRICK VENEER (SOLDER COURSE), MCNEAR BRICK & BLOCK, STANDARD SERIES, MODULAR, GENOVA, MOTOR: WORARITE #2410 SLATE, TYPE S MORTAR



C1 ELEVATION

3/16" = 1'-0" SOUTH



A1 ELEVATION

3/16" = 1'-0" NORTH

SPLASH IN CAR WASH
 #2139 LEONARDTOWN
 40874 POINT LOOKOUT ROAD
 LEONARDTOWN, MD 20650
 THE WILLS GROUP

MARK	DATE	DESCRIPTION

PROJECT #: 423166
 DRAWN BY: KL
 CHECKED BY: RL
 ISSUED:

DATE:
 RYAN W. LEMON, AIA
 I CERTIFY THAT THESE DOCUMENTS WERE PREPARED OR APPROVED BY ME, AND THAT I AM A DULY LICENSED ARCHITECT UNDER THE LAWS OF THE STATE OF MARYLAND.
 LIC: 17606 EXP: 03 FEBRUARY 2024

ELEVATIONS - BUILDING
A-201

NOT FOR CONSTRUCTION

