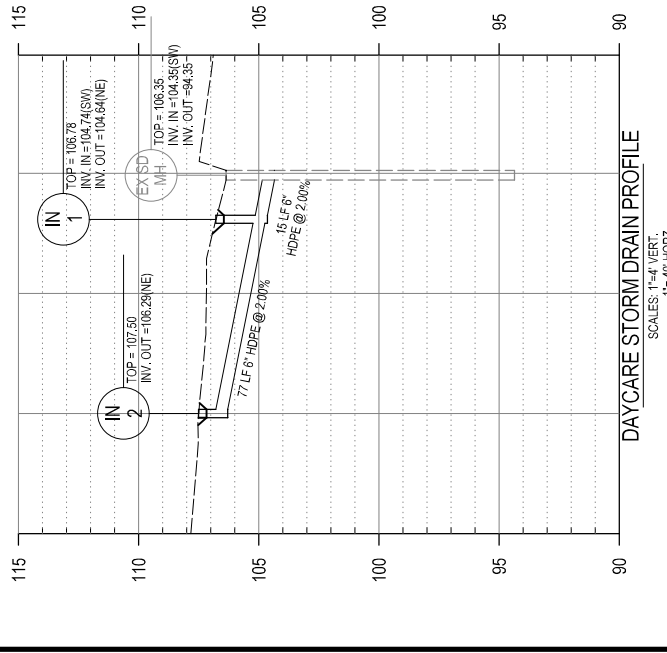
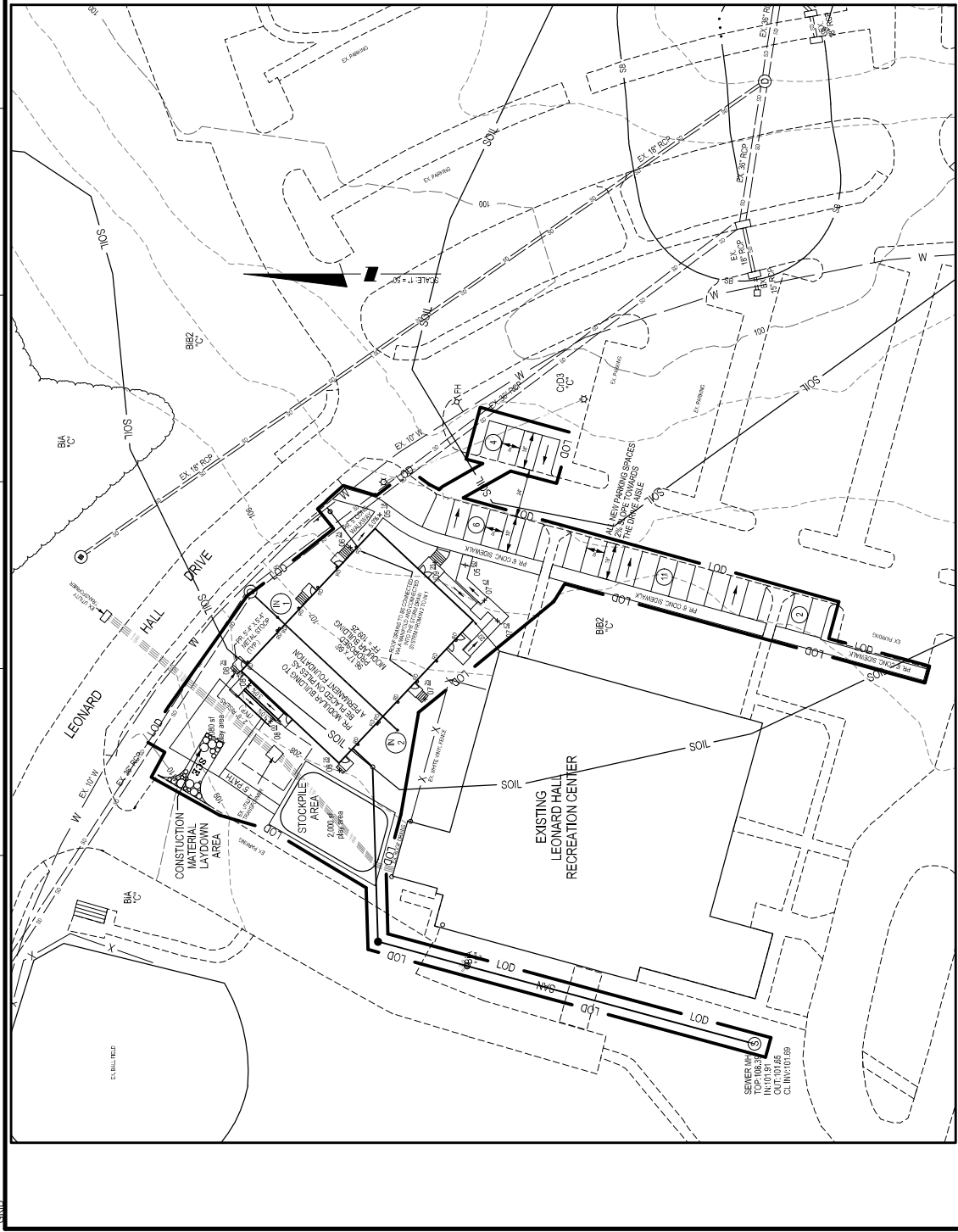
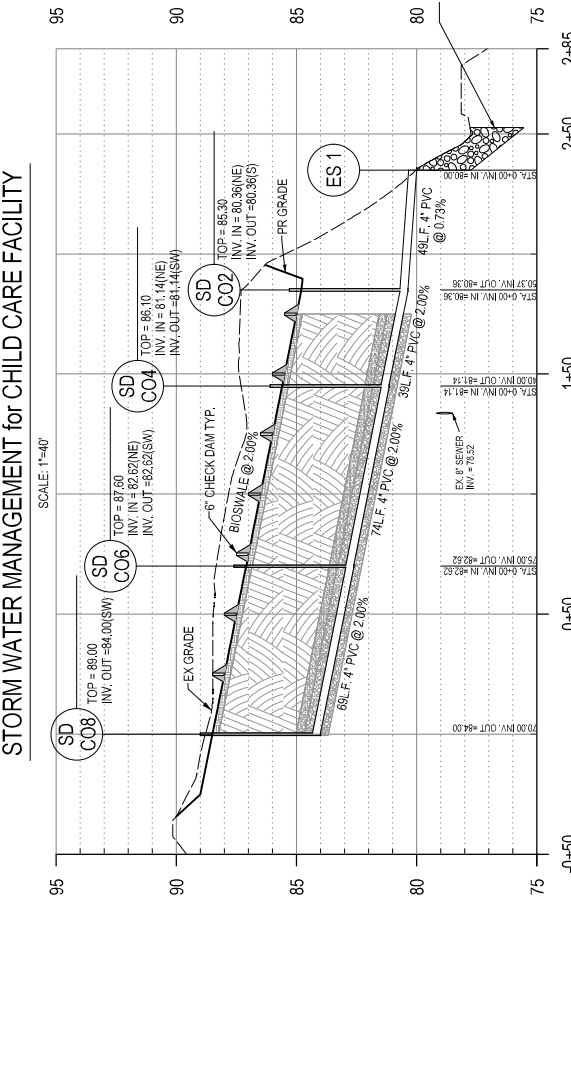
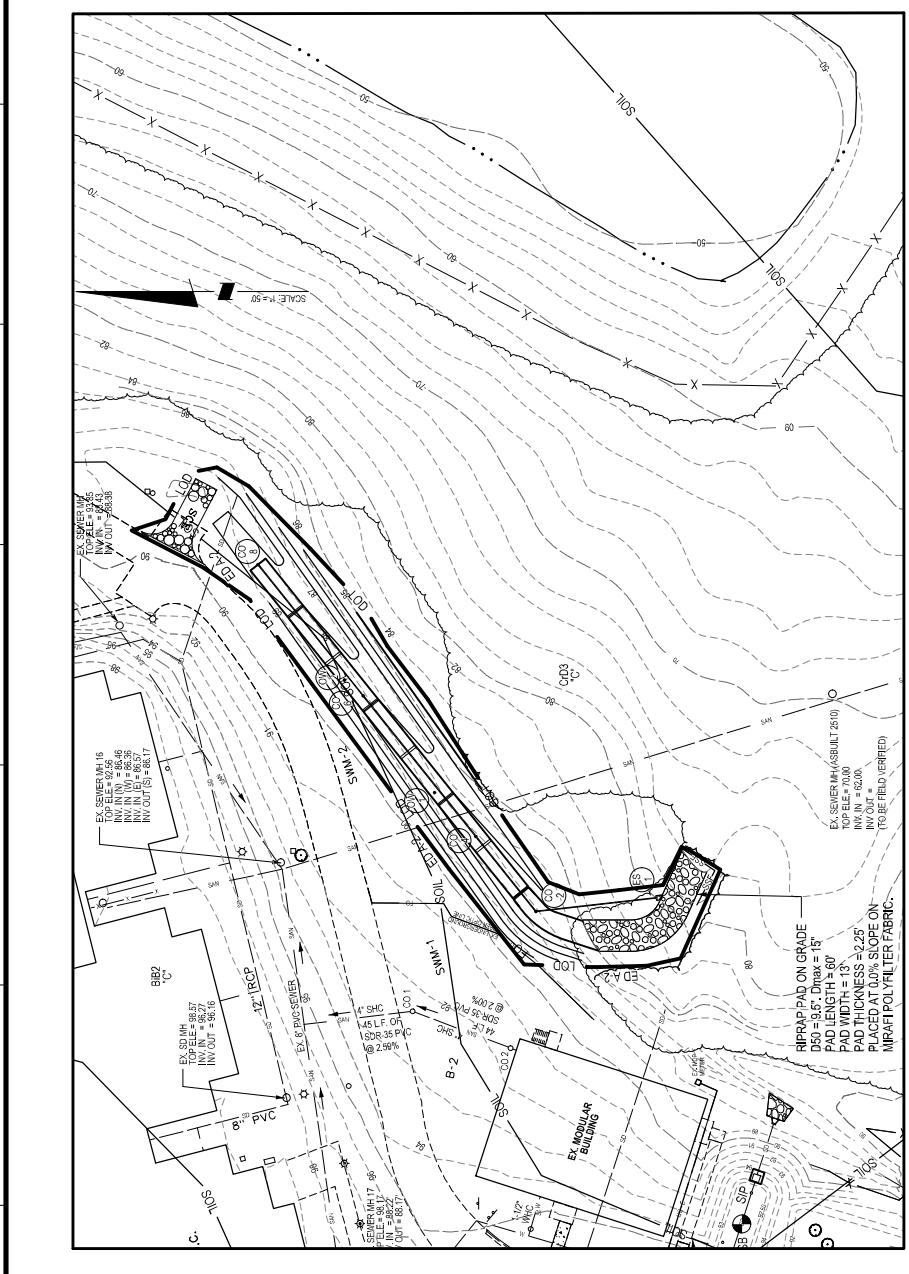


REFERENCE GRID: A N, B M, C L, D K, E J, F I, G H, 1 2, 3 4, 5 6, 7 8, 9



STORM DRAIN PIPE SCHEDULE

Number	Size	Length (LF)	Type / Material	Slope (S) (%)	Manning Coefficient
IN 2 TO IN 1	6	77	PVC	2.00%	0.011
IN 1 TO EX MH	6	15	PVC	2.00%	0.011
CO 8 TO CO 6	4	69	PVC	2.00%	0.011
CO 6 TO CO 4	4	74	PVC	2.00%	0.011
CO 4 TO CO 2	4	39	PVC	2.00%	0.011
CO 2 TO ES 1	4	49	PVC	0.73%	0.011



STORMWATER MANAGEMENT SUMMARY TABLE

Drainage Area Label	Imp Area (acres)	Imp Area %	Target PE	Rv	ESDVs Provided (cu ft)	1 Yr 24 Hr Storm Volume (cu ft)	Pe Provided (cu ft)	As-Built Volume (cu ft)	As-Built Provided
SWM-1 DA1	0.96	0.32	33.52	1.80	0.63	3,319	1.98		
Total ESDVs Provided =						2,433			
Total ESDVs Required From LOD Computation =						2,340			

SOLTESZ, INC.
 WALDORF OFFICE
 401 Post Office Road, Suite 103
 Waldorf, MD 20602
 P. 301.870.2166 F. 301.870.2884
 www.solteszco.com

OWNER/DEVELOPER/APPLICANT
 THE BOARD OF COUNTY COMMISSIONERS
 FOR ST. MARY'S COUNTY MARYLAND
 P.O. BOX 653
 LEONARDTOWN, MARYLAND 20650
 PHONE # 301-863-9600
 JAMES M. GOTSCH, P.E.

MISS UTILITY NOTE
 INFORMATION CONCERNING EXISTING UNDERGROUND UTILITIES...
 THE STATE OF MARYLAND
 PROFESSIONAL ENGINEER
 LICENSE NO. 25268
 EXPIRATION DATE: 7/16/2026

STORMWATER MANAGEMENT PLAN, PROFILES & DETAILS

SITE PLAN
ST. MARY'S COUNTY
MODULAR UNIT ADDITION

THIRD (P&I) ELECTION DISTRICT, ST. MARY'S COUNTY, MARYLAND

PROJECT NO. 3741-01-00

The original of this drawing document was prepared by Soltesz, Inc. (SOLTESZ). If this document was not obtained directly from SOLTESZ and/or it was transmitted electronically, SOLTESZ cannot guarantee the accuracy of any information that has been transmitted by electronic means. SOLTESZ makes no warranties, express or implied, concerning the accuracy of any information that has been transmitted by electronic means. If you are not the intended recipient of this information, please notify the sender immediately by e-mail or phone. SOLTESZ, Inc. is not responsible for any actions taken based on the information contained herein. SOLTESZ, Inc. is not responsible for any actions taken based on the information contained herein. SOLTESZ, Inc. is not responsible for any actions taken based on the information contained herein.